



# Tech Tuesday: Citizen Science

What is it, and how can you get involved?

Presentation adapted from  
<https://scistarter.org/training>

# Today's Agenda



**Introductions**



**What is Citizen Science?**



**How to Get Started**



**Taking a Closer Look**



**Wrap-up**



**What comes  
to mind when  
you hear the  
phrase citizen  
science?**

---

# **What is citizen science?**

---



# Citizen Science

A **collaboration** between scientists and those of us who are curious, concerned, and motivated to make a difference.

It's how people can make an impact on issues they care about...and help science!



# Citizen Science

- **community science**
- **participatory research**
- **DIY science**
- **crowdsourcing**
- **public engagement in scientific research**

## Imagine this tree in your neighborhood.

What do you notice?

- How many leaves do you see in relation to flowers?
- Do you see buds on the branches?
- Are the flowers in full bloom or are some wilted?





I see very few, if any, leaves on the tree in relation to flowers.



I do not see any buds on the branches; I only see flowers. There are more flowers than buds.



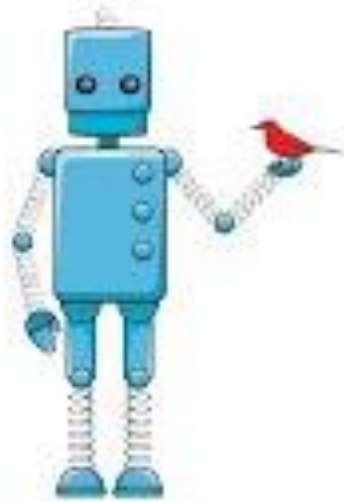
The flowers are in full bloom.





# **You just participated in citizen science!**

You just shared observations that scientists can use to research climate change or the appearance of destructive invasive species, and that city planners might use to better understand tree canopies and heat effects.



**scistarter**  
People-powered science.

**Why is it  
important?**

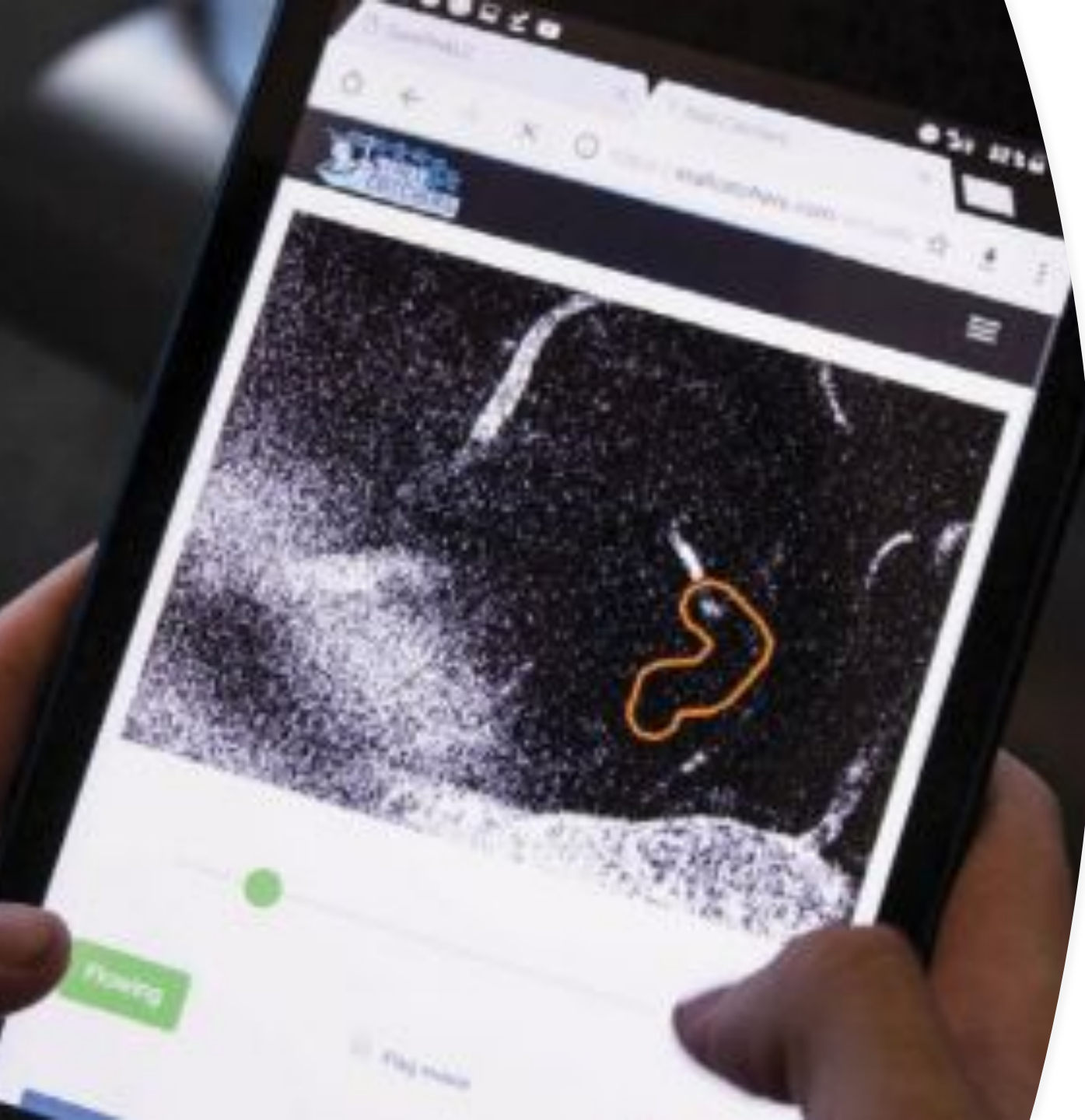
---



---

# Because of citizen scientists, we now know...

- Bird populations have declined by 50%
- Birds are breeding earlier
- 50+ types of bacteria live in your belly button
- The first flowering of 19 species of plants has moved 9 days earlier over the past decade
- There's a new type of aurora in the night sky (and the citizen scientists named it Steve!)
- There's another Jupiter-sized planet
- Invasive mosquito species have arrived in Germany



---

# Plus!

---

In one weekend in 2019, citizen scientists accomplished 2,566 research hours, or 3.5 months of lab-equivalent research time, for an Alzheimer's research project.

# Who can do citizen science?

Citizen scientists are typically people without specialized training who participate in scientific research to help answer questions that cannot be answered without their help.

---

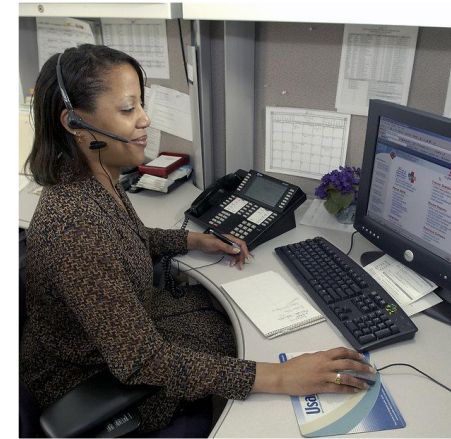


**The  
answer is  
anyone!**

**Retired  
people**



**Busy working  
adults**



**Community  
Groups**



**Youth  
groups**





**How do you  
get started?**

---



PEOPLE LIKE YOU ARE

DISCOVERING  
NEW WORLDS

↓ FIND A PROJECT

by Keyword

by Topic

Online only

Near me

Find a Project [Advanced search](#)

# Step 1: Join [SciStarter.org](https://www.scistarter.org)

SciStarter is a globally acclaimed, online citizen science hub where more than 3,000 projects from all over the internet have been organized and made searchable!



# Create an account

## CREATE A SCISTARTER ACCOUNT ×

If you already have an account, [log in](#) to continue

Username

\* Email

Zip Code

\* Password

\* Repeat password

Sign up for our newsletter

\* Agree to SciStarter's [Terms of Use](#)

# Find projects that interest you!



## **The Great Sunflower Project**

Document pollinators in your community.



## **Caterpillars Count!**

Measure seasonal variation by counting arthropods.



## **Globe at Night**

Monitor light pollution.

**Anywhere. Anytime. Any topic.**

## Project Finder

Enter a word or a phrase

Enter a location

Projects to do while... ▾

Select a topic ▾

only projects that... ▾

Age group(s) ▾

1-11 of 1563 Newest Oldest

### TeachOSM

TeachOSM

#### TeachOSM - Open Mapping

Goal Teach spatial citizenship & geographic [more»](#)

Task Map your community on OpenStreetMap.

Where Global, anywhere on the planet

#### Unemployment, From Obama To Trump

Year	Unemployment Rate
2006	5%
2008	~7%
2009	10%
2010	~9%
2012	~8%
2014	~7%
2016	~6.5%
2018	~6.2%
2020	6.7%
April 2020	14.7%

Source: Bureau of Labor Statistics

#### Identifying Social Structure through Citizen Science Data on Water Quality

Goal Participate in Crowd the Tap and Analyze [more»](#)

Task Establish Account, Conduct Research and [more»](#)

## Step 2: Search [SciStarter.org/finder](https://www.scistarter.org/finder)

The projects and events on SciStarter.org represent a wide array of topics and research programs that participants from diverse communities and backgrounds can engage in anywhere, anytime, just once or on an ongoing basis.

# What skills do I need to do citizen science?



When you do citizen science you are using **science process skills.**



# Taking a Closer Look

---

<https://scistarter.org/project-squirrel>



## PROJECT SQUIRREL

Help scientists better understand tree squirrel ecology.





# Let's Reflect

What skills did you practice while completing Project Squirrel?



# Let's Reflect

What skills did you practice while completing Project Squirrel?



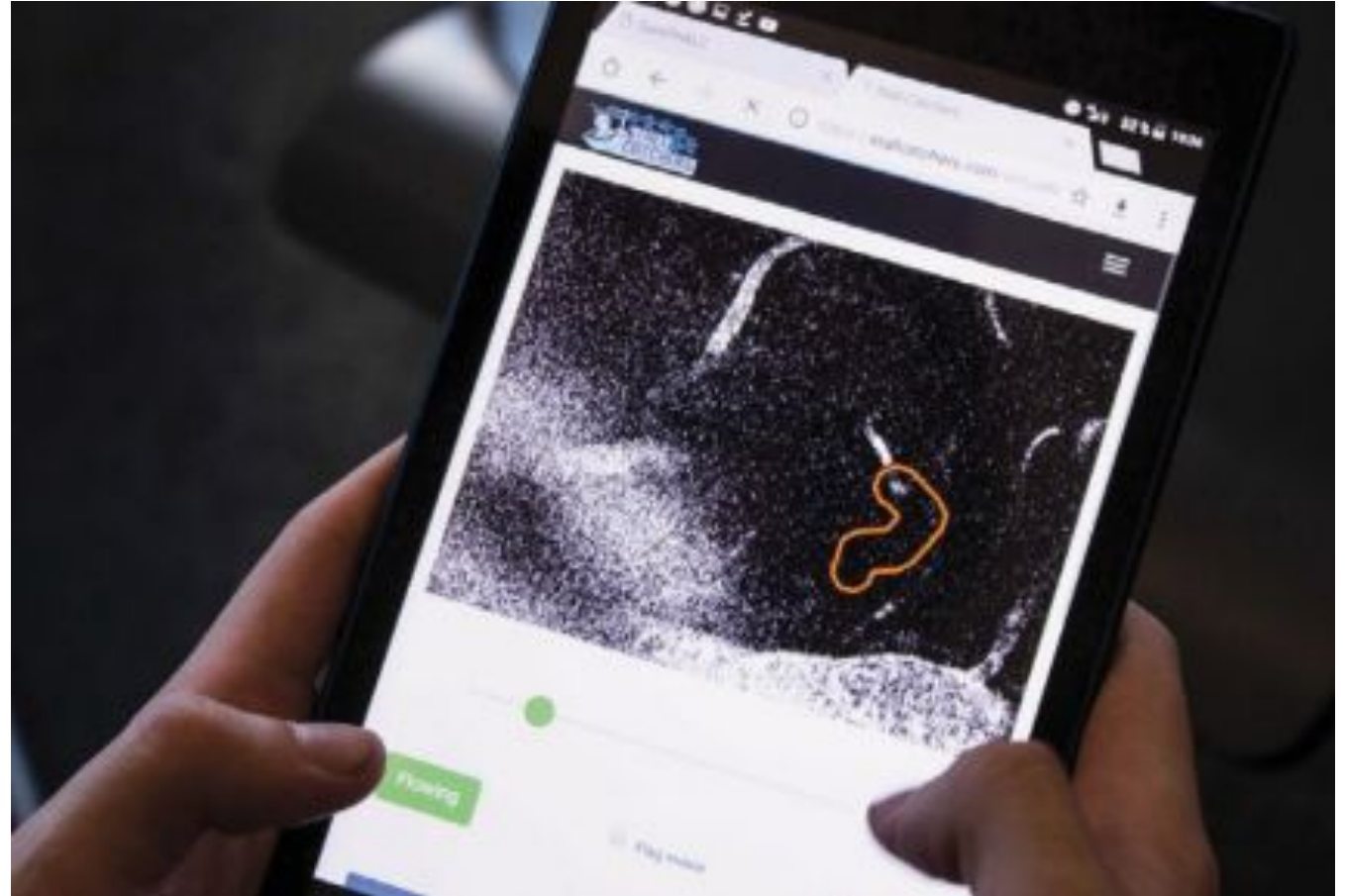
# What is Stall Catchers?

---

A citizen science game that contributes to **Alzheimer's** research.

Learn more here:

<https://stallcatchers.com/main>

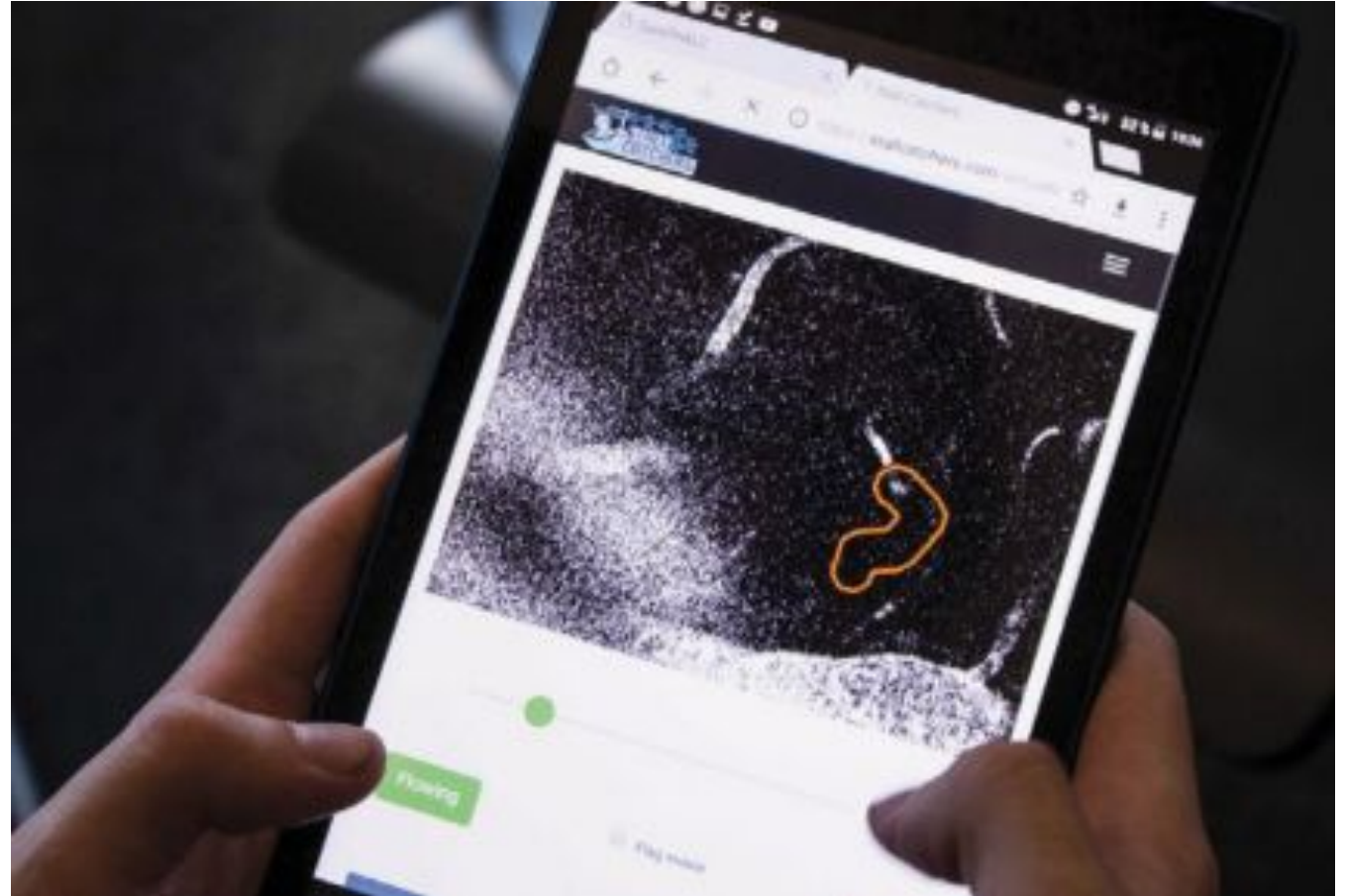


# Stall Catchers

---

Let's try it!

[https://media.scistarter.org/stallcatchers-demo/SCDemo\\_p1.html](https://media.scistarter.org/stallcatchers-demo/SCDemo_p1.html)



Play a game to accelerate **Alzheimer's** research.

# Enter Stall Catchers!



**>28 000  
catchers**



**50-100  
play every day**



**5x faster  
research**



**1-2 months  
per research  
question**

CHECK  
IT OUT!

# CITIZEN SCIENCE

AT YOUR LIBRARY

Many [libraries across the country](#) are becoming hubs for citizen science, where you can access books, field guides, computers, Wi-Fi, subject matter experts, telescopes and other citizen science resources.

Search the [WOW Collection](#) at the library for a

- [Rock Identification Kit](#)
- [Birding Backpack](#)
- [Check Out Washington Backpack](#)

To place a request visit  
[jclibrary.info](http://jclibrary.info)





BROADENS THE SCOPE OF WHO CAN CONTRIBUTE TO SCIENCE.



ENABLES PARTICIPANTS TO ENGAGE IN DATA COLLECTION, ANALYSIS, AND INTERPRETATION.



ENABLES PARTICIPANTS TO LEARN ABOUT THE NATURE OF SCIENCE AND SCIENTIFIC REASONING.



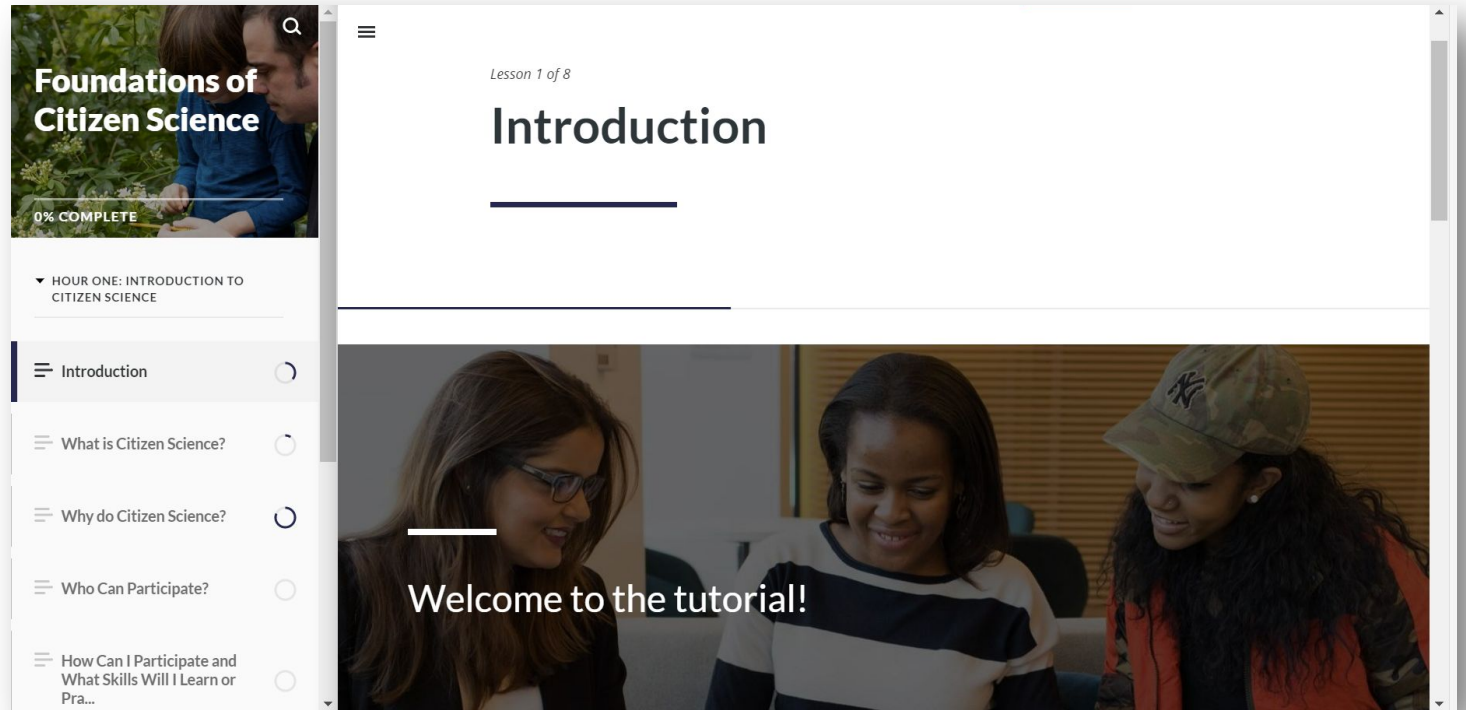
ACCELERATES IMPORTANT RESEARCH AND DISCOVERY.

## Benefits to Science & Society

Citizen science enables people from all walks of life to actively learn more about the world and address issues they are curious or concerned about.

# Now you're ready!

Complete the Foundations of Citizen Science Training and earn a badge.



The screenshot shows a web-based training interface. On the left is a sidebar with a header image of a child and a man, titled "Foundations of Citizen Science" with a "0% COMPLETE" progress indicator. Below the header is a dropdown menu for "HOUR ONE: INTRODUCTION TO CITIZEN SCIENCE" containing a list of topics: "Introduction", "What is Citizen Science?", "Why do Citizen Science?", "Who Can Participate?", and "How Can I Participate and What Skills Will I Learn or Pra...". The main content area displays "Lesson 1 of 8" and "Introduction" with a horizontal line underneath. Below this is a video player showing three women looking at a laptop, with the text "Welcome to the tutorial!" overlaid on the video.

Visit [SciStarter.org/Training](https://SciStarter.org/Training) for more information.



# Questions?

---

## Contact Us

Jefferson County Library

620 Cedar Avenue

Port Hadlock, WA 98339

phone: (360) 385-6544

email: [information@jclibrary.info](mailto:information@jclibrary.info)